



2AMI

天文のジカン

Vol.0



Horsehead Nebula

Telescope: Skywatcher Esprit 100ed / Mount: Skywatch Heq5/ Camera: ASI294mc Pro / Exposure : 300s x 80, calibration with dark and flats. Gain0, temp -20.



NGC2264 - Christmas tree nebula

Telescope: Skywatcher Esprit 100ed / Mount: Skywatch Heq5/ Camera: ASI294mc Pro / Exposure : 300s x 67, calibration with dark and flats. Gain0, temp -20.



Widefield Auriga

Lens: Sigma art 50mm / Mount: Skywatcher StarAdventure / Camera: Canon 60D mod / Exposure : 180s x 70



Widefield Monocers to Gemini

Lens: Sigma art 50mm / Mount: Skywatcher StarAdventure / Camera: Canon 60D mod / Exposure : 180s x 80



Sh2-190 Heart Nebula

Telescope: Celestron RASA8 / Mount: Skywatch Heq5/ Camera: ASI294mc Pro / Exposure : 180 x 76, calibration with dark and flats. Gain0, temp -20.



IC1396 Elephant trunk

Telescope: Skywatcher Esprit 100ed / Mount: Skywatch Heq5/ Camera: ASI294mc Pro / Exposure : 300s x 75, calibration with dark and flats. Gain0, temp -20.



M8 Lagoon nebula

Telescope: Skywatcher Esprit 100ed / Mount: Skywatch Heq5/ Camera: ASI294mc Pro / Exposure : 300s x 30, calibration with dark and flats. Gain0, temp -20.



LDN1235 Darkshark Nebula

Telescope: Celestron RASA8 / Mount: Skywatch Heq5/ Camera: ASI294mc Pro / Exposure : 60s x 185, calibration with dark and flats. Gain0, temp -20.



Vdb 152

Telescope: Celestron RASA8 / Mount: Skywatch Heq5/ Camera: ASI294mc Pro / Exposure : 60s x 174, calibration with dark and flats. Gain0, temp -20.



Widefield Cepheus

Lens: Sigma art 50mm / Mount: Skywatcher StarAdventure / Camera: Canon 60D mod / Exposure : 180s x 259



Horsehead Nebula

Telescope: Celestron RASA8 / Mount: Skywatch Heq5/ Camera: ASI294mc Pro / Exposure : 60s x 731, calibration with dark and flats. Gain0, temp -20.



Veil Nebula

Telescope: Celestron RASA8 / Mount: Skywatch Heq5/ Camera: ASI294mc Pro / Exposure : 180 x 40, calibration with dark and flats. Gain0, temp -20. / IDAS NB1 Filter



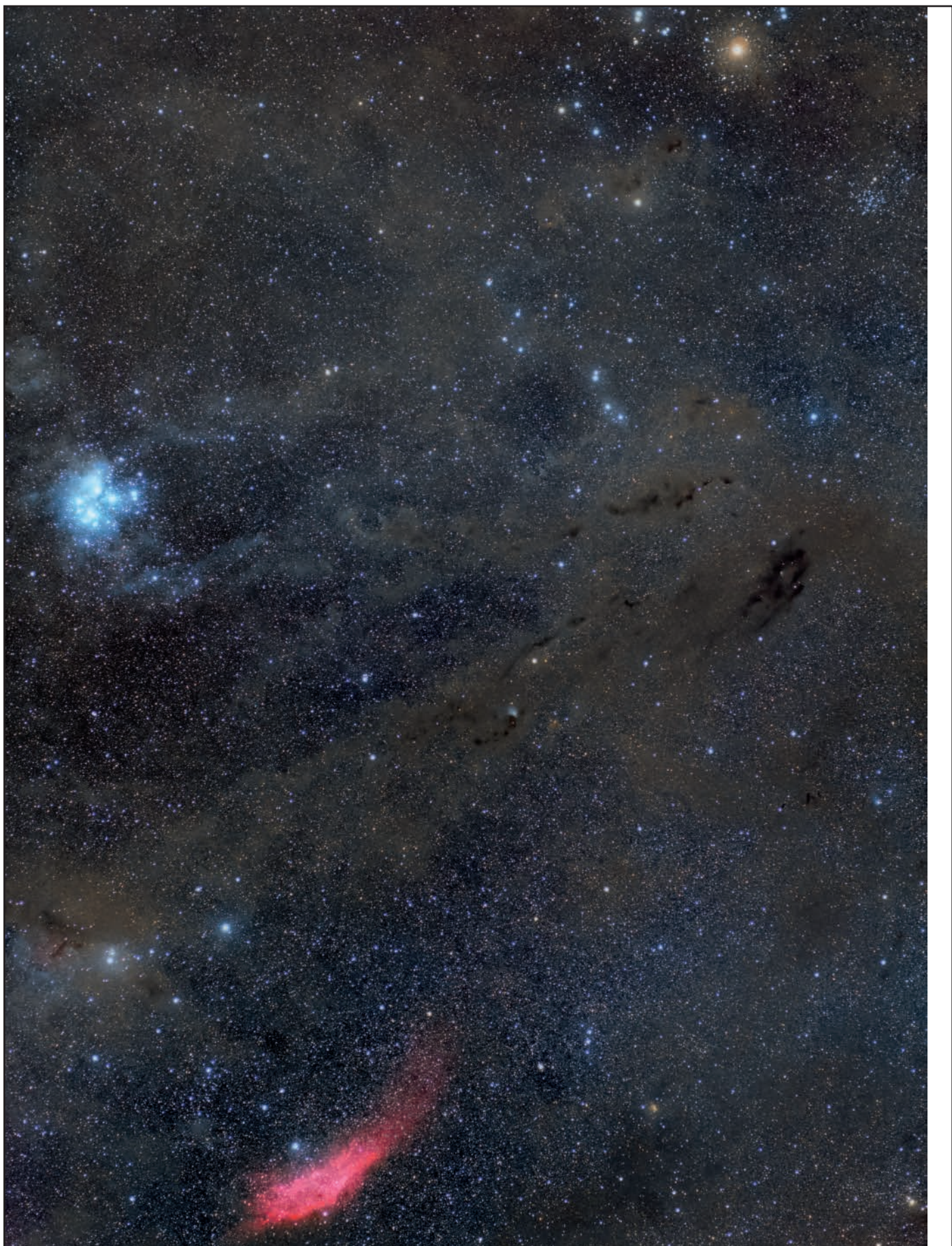
Sagittarius Star Cloud

Telescope: Skywatcher Esprit 100ed / Mount: Skywatch Heq5/ Camera: ASI294mc Pro / Exposure : 300s x 29, calibration with dark and flats. Gain0, temp -20.



M44

Lens: Samyang 135mm / Mount: Skywatch azgti / Camera: ASI294mc Pro / Exposure : 120s x 60, calibration with dark and flats. Gain0, temp -20.



Widefield Taurus

Lens: Sigma art 50mm / Mount: Skywatcher StarAdventure / Camera: Canon 60D mod / Exposure : 180s x 80



NGC7129

Telescope: Skywatcher Esprit 100ed / Mount: Skywatch Heq5/ Camera: ASI294mc Pro / Explosure : 300s x 96, calibration with dark and flats. Gain0, temp -20.



Sh2-155 Cave nebula

Telescope: Celestron RASA8 / Mount: Skywatch Heq5/ Camera: ASI294mc Pro / Explosure : 60s x 254, calibration with dark and flats. Gain0, temp -20.



Abel85

Telescope: Skywatcher Esprit 100ed / Mount: Skywatch Heq5/ Camera: ASI294mc Pro / Explosure : 300s x 120, calibration with dark and flats. Gain0, temp -20. / Optlong eXtreme filter



NGC7635 Bubble Nebula and M52

Telescope: Skywatcher Esprit 100ed / Mount: Skywatch Heq5/ Camera: ASI294mc Pro / Explosure : 300s x 50, calibration with dark and flats. Gain0, temp -20.



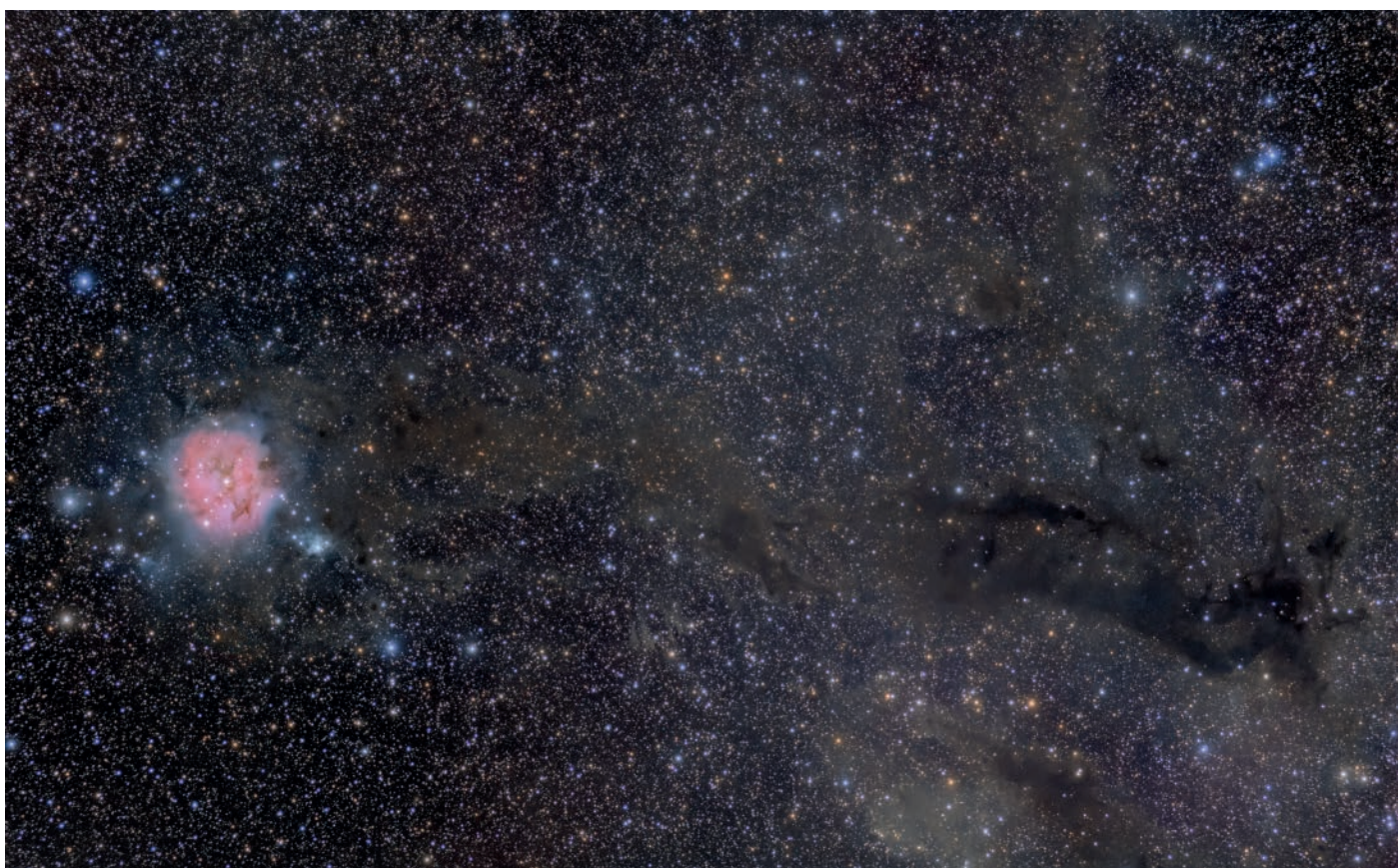
NGC7822 Question Mark Nebula

Lens: Samyang 135mm / Mount: Skywatch azgti / Camera: ASI294mc Pro / Exposure : 300s x 60, calibration with dark and flats. Gain0, temp -20. / Optlong eXtreme Filter



Sh2-199 Soul Nebula

Telescope: Skywatcher Esprit 100ed / Mount: Skywatch Heq5/ Camera: ASI294mc Pro / Exposure : 300s x 48, calibration with dark and flats. Gain0, temp -20.



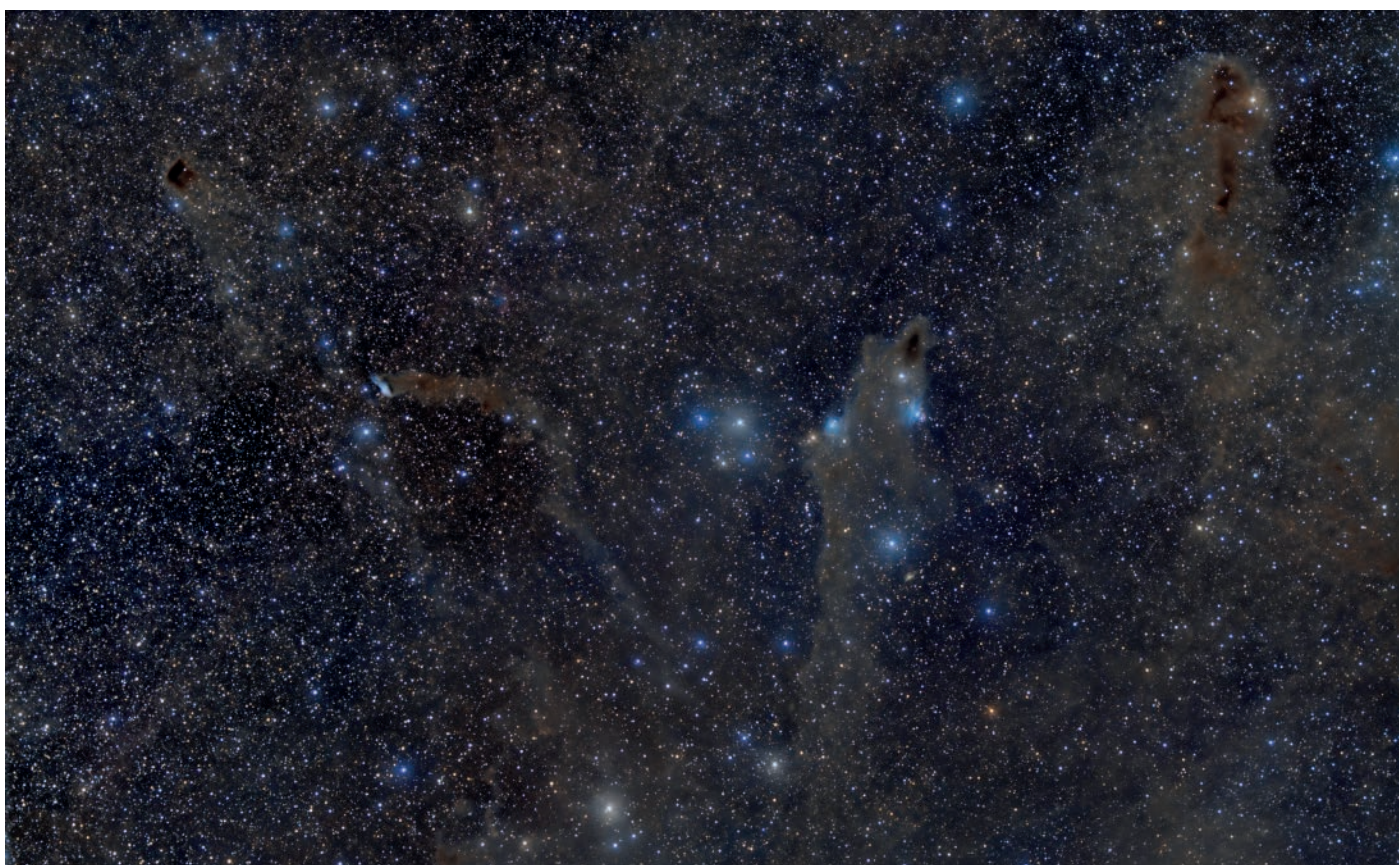
Sh2-125 Cocoon Nebula

Telescope: Skywatcher Esprit 100ed / Mount: Skywatch Heq5/ Camera: ASI294mc Pro / Exposure : 300s x 80, calibration with dark and flats. Gain0, temp -20.



NGC7023 Iris nebula

Telescope: Skywatcher Esprit 100ed / Mount: Skywatch Heq5/ Camera: ASI294mc Pro / Exposure : 300s x 60, calibration with dark and flats. Gain0, temp -20.



Cepheus dark nebula

Lens: Samyang 135mm / Mount: Skywatch azgti / Camera: ASI294mc Pro / Exposure : 300s x 60, calibration with dark and flats. Gain0, temp -20.



C2020/F3 Comet Neowise

Lens: Samyang 135mm / Mount: Skywatch azgti / Camera: ASI294mc Pro / Exposure : 30s x 10, calibration with dark and flats. Gain0, temp -20.